
A Guide to Alton and Southern Steam



-Sam Aufmuth-

Cover Photo from the collection of David Huelsing. Mikado No. 27, the last A&S steam locomotive, takes a train across the MacArthur Bridge sometime after World War II.

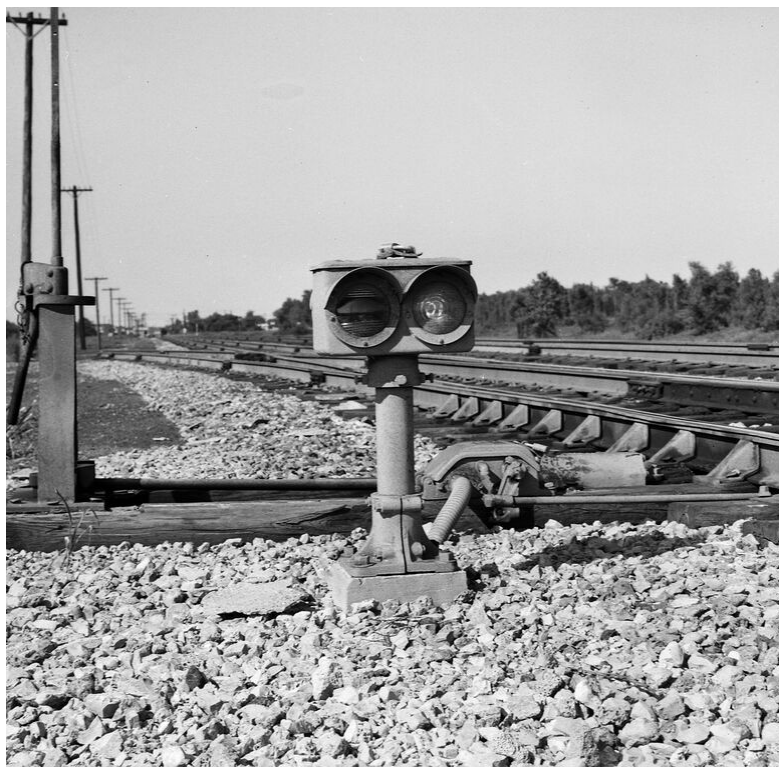


Photo of an A&S switch signal from the collection of the Missouri Pacific Historical Society

This Work Produced in Association with the
National Museum of Transportation
and the
Missouri Pacific Historical Society

February of 2018

All textual material contained within this book may be reproduced at will for learning purposes with credit given where due. Photographs and images are the property of their owners, and may not be copied or reproduced unless otherwise stated.

Author's Note

This work, "A Guide to Alton and Southern Steam" is the culmination of an effort to create as complete and detailed as possible record of the steam locomotives used by the Alton and Southern Railroad from its inception to its demise in the late 1940's. It is hoped the reader will find what knowledge he seeks on the subject within these pages. This book is the first of its kind, and unfortunately, as is the case when collecting historical research, there are gaps in records, documents which are not known to exist, and even mistakes. While it can be hard to identify locations, dates, and events after many, many decades, the author has made every attempt to find what technical and photographic information is available to help build this resource and fill any gaps. It should be remembered that this is 'A Guide' not 'The Guide' to A&S steam. Any additional information, documents, or corrections that can contribute to making this resource more complete and accurate are welcomed, even invited, so that a second edition of this work may be even greater than the first.

The author would also like to express his deep thanks to those who contributed their valuable time and effort to help track down, collect, scan, and forward information and images for use in this document; especially Teresa Militello, David Huelsing, and Allen Stanley. This would not have been possible without their assistance.

-Sam Aufmuth
October, 2017

Table of Contents

Introduction.....	1
Early Locomotives.....	5
Switching Locomotives.....	9
Alton and Southern Mikados.....	39
The End of an Era.....	76